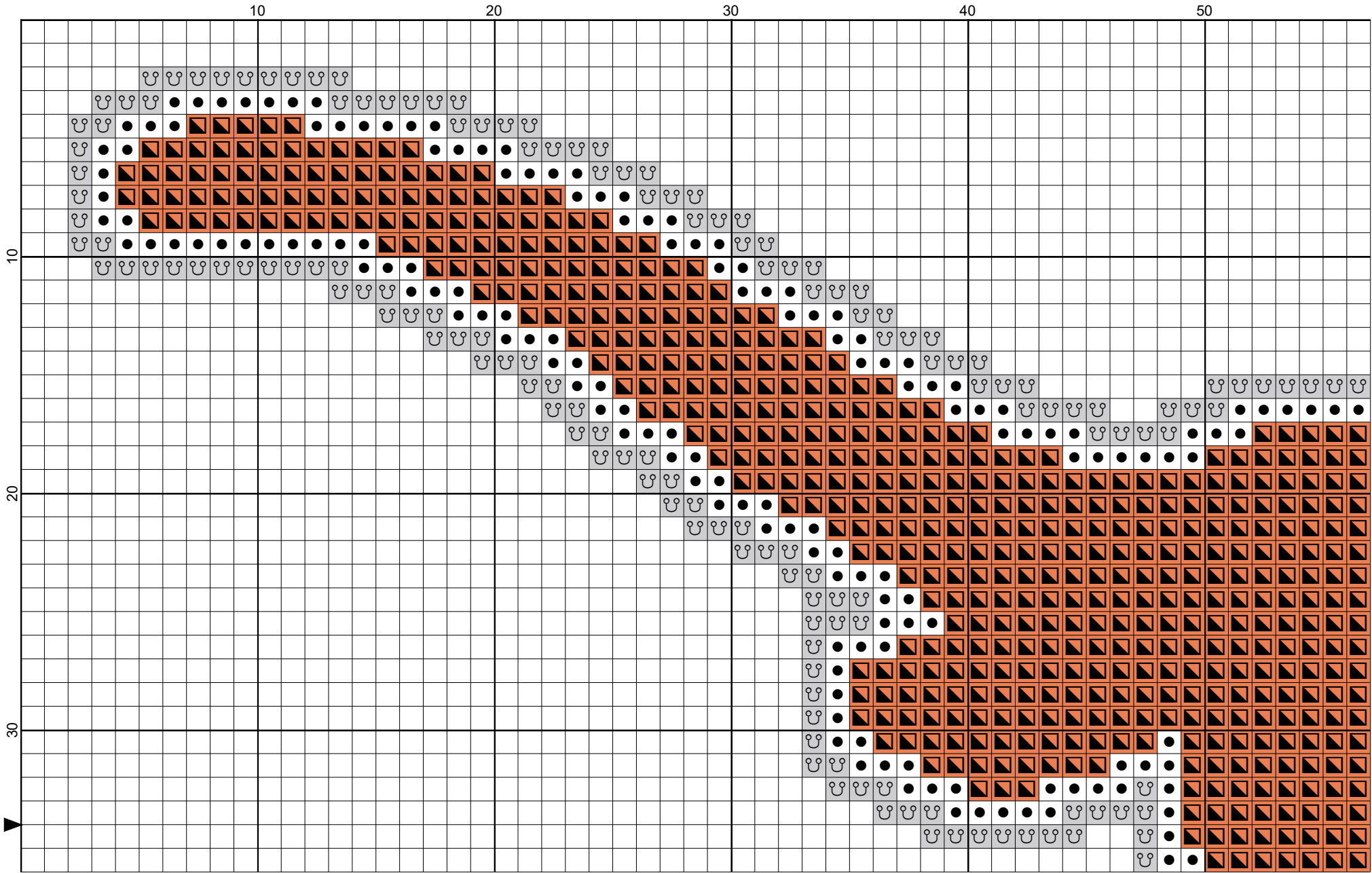


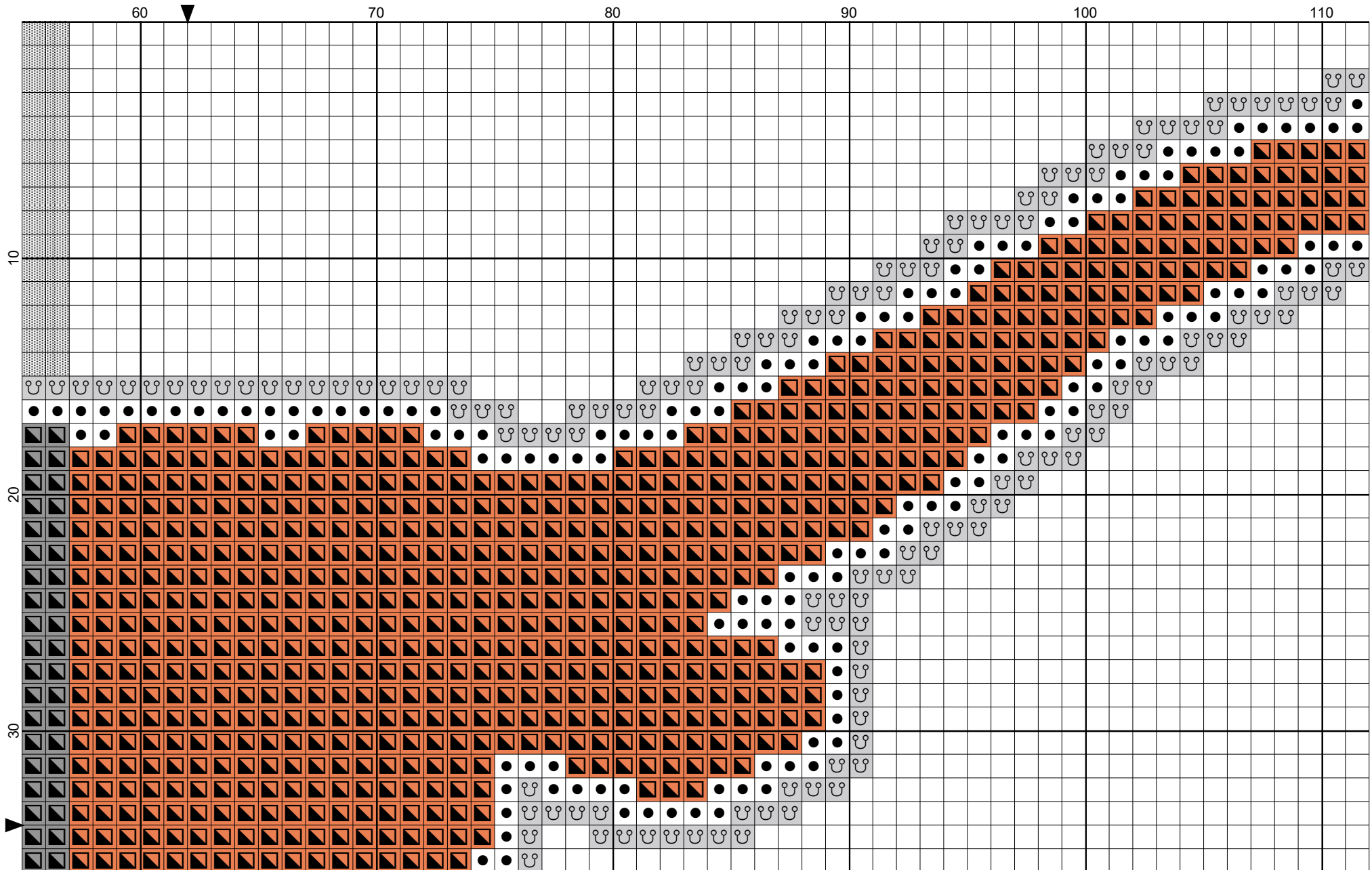
# Texas Longhorns Logo by The Cross Stitch Guy



Hand Designed by The Cross Stitch Guy. This product is not licenced.

*Dream of making it... the Memories will last forever! Display Proudly & Happy Stitching!!*

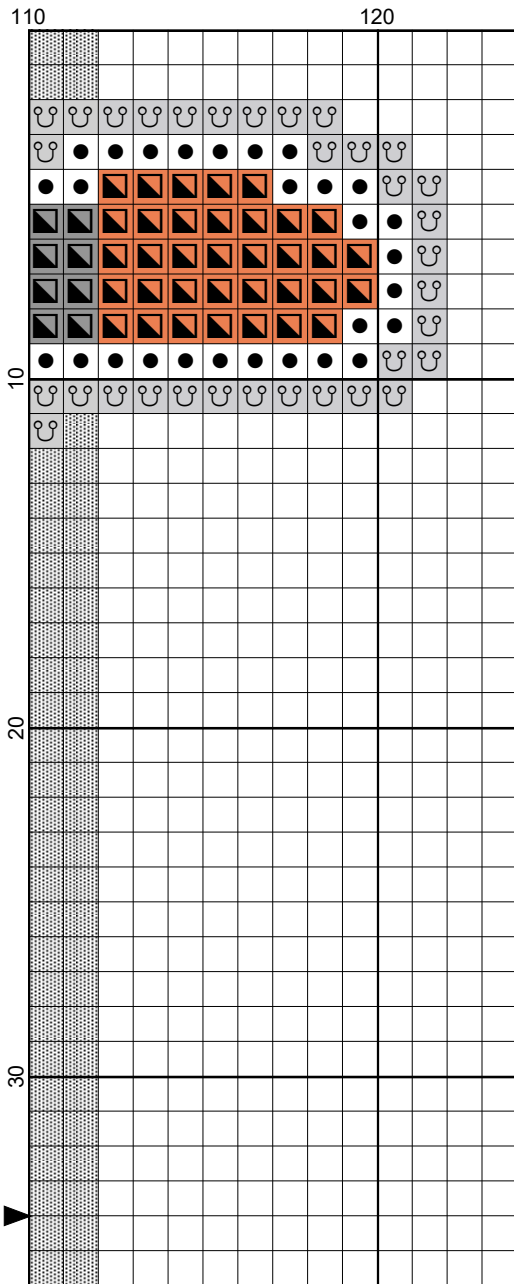
# Texas Longhorns Logo by The Cross Stitch Guy






Hand Designed by The Cross Stitch Guy. This product is not licenced.

*Dream of making it... the Memories will last forever! Display Proudly & Happy Stitching!!*

# Texas Longhorns Logo by The Cross Stitch Guy

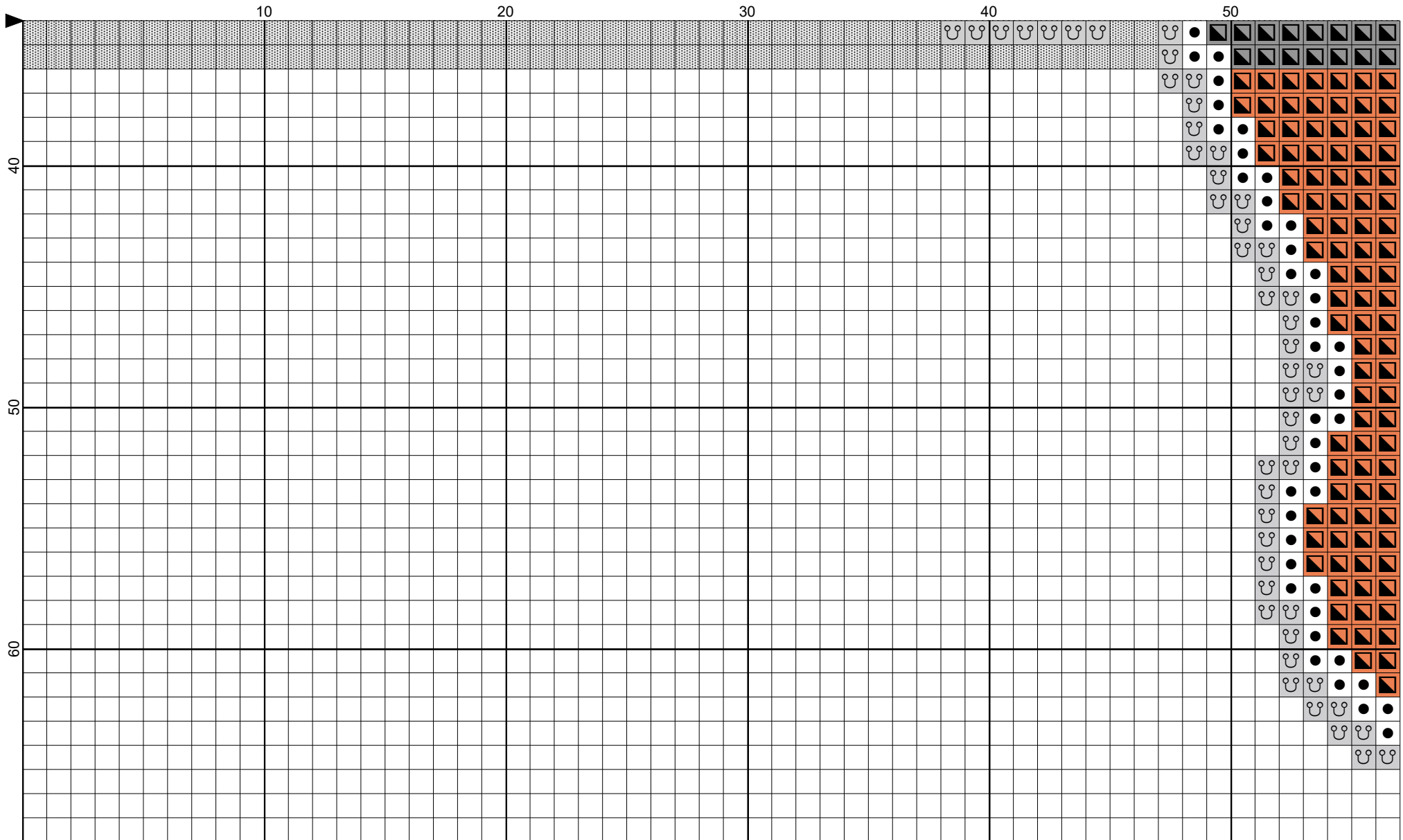


- Legend:
-  DMC-921 copper
  -  DMC-White white
  -  DMC-415 pearl gray

Hand Designed by The Cross Stitch Guy. This...

*Dream of making it... the Memories will last forever! Display Proudly & Happy Stitching!!*

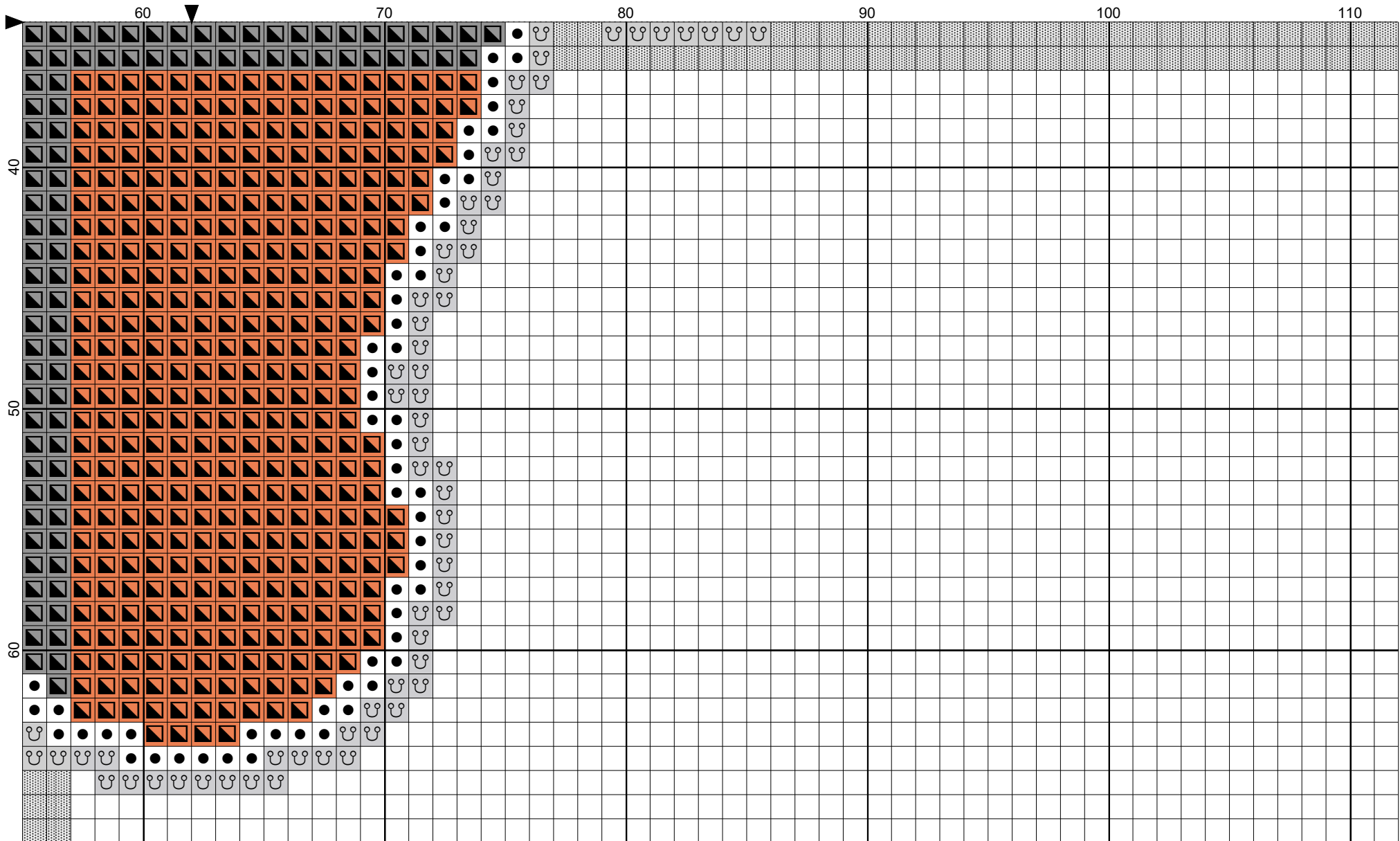
# Texas Longhorns Logo by The Cross Stitch Guy



Hand Designed by The Cross Stitch Guy. This product is not licenced.

*Dream of making it... the Memories will last forever! Display Proudly & Happy Stitching!!*

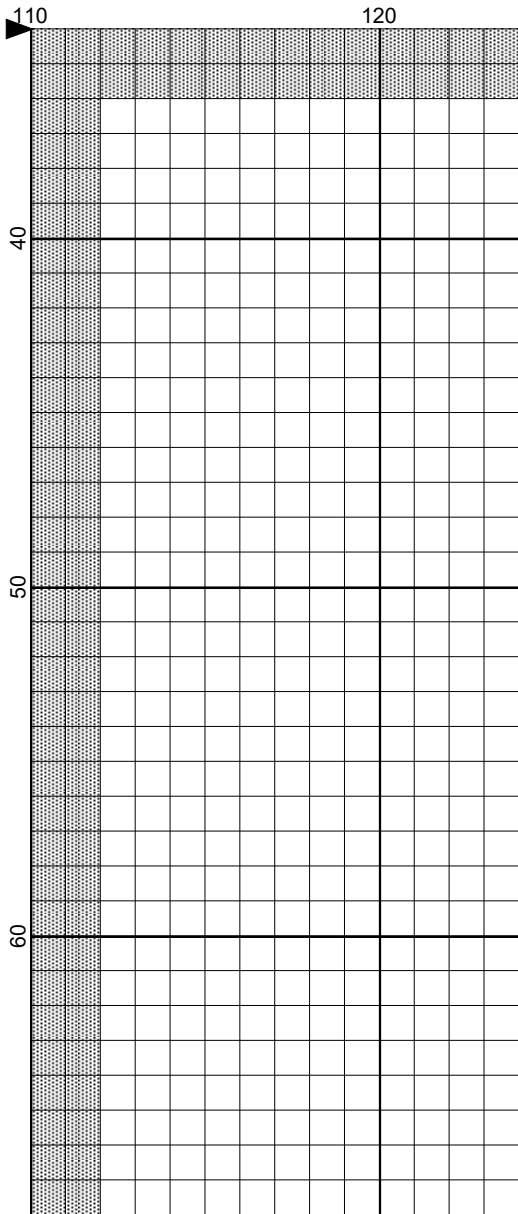
# Texas Longhorns Logo by The Cross Stitch Guy



Hand Designed by The Cross Stitch Guy. This product is not licenced.

*Dream of making it... the Memories will last forever! Display Proudly & Happy Stitching!!*

# Texas Longhorns Logo by The Cross Stitch Guy



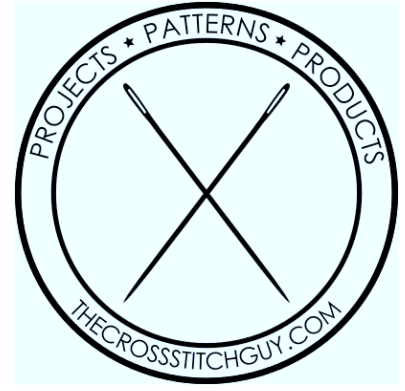
Hand Designed by The Cross Stitch Guy. This...

*Dream of making it... the Memories will last forever! Display Proudly & Happy Stitching!!*



# Texas Longhorns Logo


---

**Author:** The Cross Stitch Guy  
**Company:** The Cross Stitch Guy  
**Copyright:** Hand Designed by The Cross Stitch Guy. This product is not licenced.  
**Website:** <http://TheCrossStitchGuy.com>  
**Fabric:** 14 Count White Aida Cloth  
**Grid Size:** 124W x 68H  
**Design Area:** 8.57" x 4.57" (120 x 64 stitches)



## Legend:

 [2] DMC-921 ANC-5975 JPC- copper (1671 stitches, 0.7 skeins)  
 [2] DMC-White ANC-1 JPC-1001 white (426 stitches, 0.2 skeins)

 [2] DMC-415 ANC-848 JPC-8398 pearl gray (420 stitches, 0.2 skeins)

